

ANZ-Roy Morgan Australian Consumer Confidence Media Release

22 September 2020



This is not personal advice.
It does not consider your
objectives or circumstances.
Please refer to the
Important Notice.

Contributors

David Plank
Head of Australian
Economics

+61 2 8037 0029

David.Plank@anz.com

Bansi Madhavani
Economist

+91 80 6795 0595

Bansi.Madhavani@anz.com

Contact

research@anz.com

Follow us on Twitter

@ANZ_Research

Series available at **Bloomberg**

AU: ALLX AUANZ <GO>

NZ: ALLX NZANZ <GO>

Previous reports available to
subscribers on [ANZ Live](#)

Three in a row

- Consumer confidence rose by 1.2% last week, with most subindices except 'current finances' and 'time to buy major household item' recording an uptick.
- 'Current finances' declined by 3.2%, while 'future finances' rose by 0.4%.
- 'Current economic conditions' rose by 8.4%, while 'future economic conditions' rose by 4.9%.
- 'Time to buy a household item' declined by 1.3% last week. This comes after a big gain of 5.3% in the week before. The four-week moving average for 'inflation expectations' rose to 3.4%.

ANZ-Roy Morgan Consumer Confidence and inflation expectations

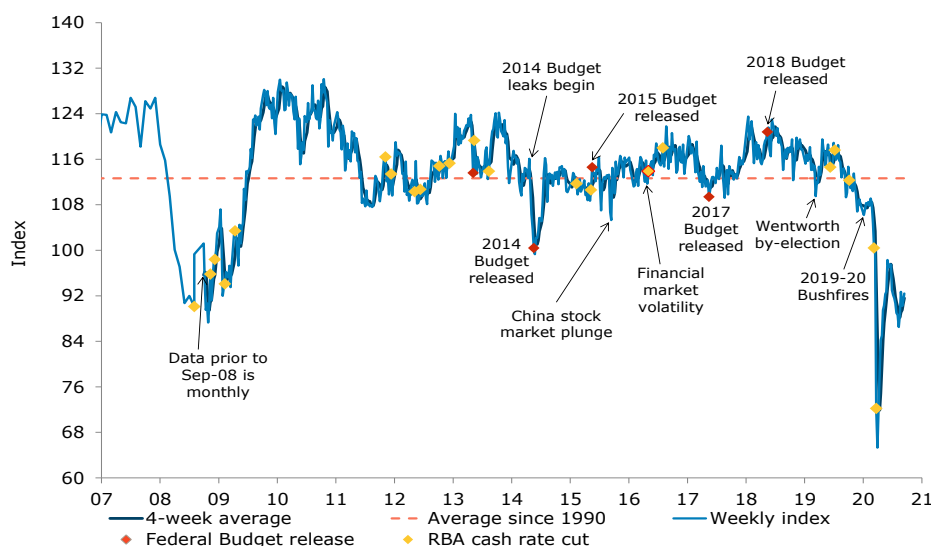
Last weekend (19-20 Sep)	Weekly change, %	Four-week average	Monthly average since 1990	Inflation expectations (four-week ma)
93.5	1.2%	91.8	112.6	3.4%

This weekly ANZ-Roy Morgan Australian Consumer Confidence Rating is based on 1,511 interviews conducted online and over the telephone on the weekend. Not seasonally adjusted. Further data history on page 6.

ANZ Head of Australian Economics, David Plank, commented:

Consumer confidence has risen for the third week in a row with the most notable improvement coming from Melbourne and the rest of Victoria. Sentiment in Melbourne is still well below neutral, but consumers there are now a touch more confident than those in Sydney. Consumer confidence in the rest of Victoria rose above the neutral 100 level for the first time since early March. The success in getting the COVID-19 new case numbers down is clearly having a big impact on confidence in Victoria. The positive surprise in the August labour market data may have bolstered sentiment more generally, though it is worth pointing out that confidence is comparable to the level reached during the depths of the GFC.

Confidence up 1.2%

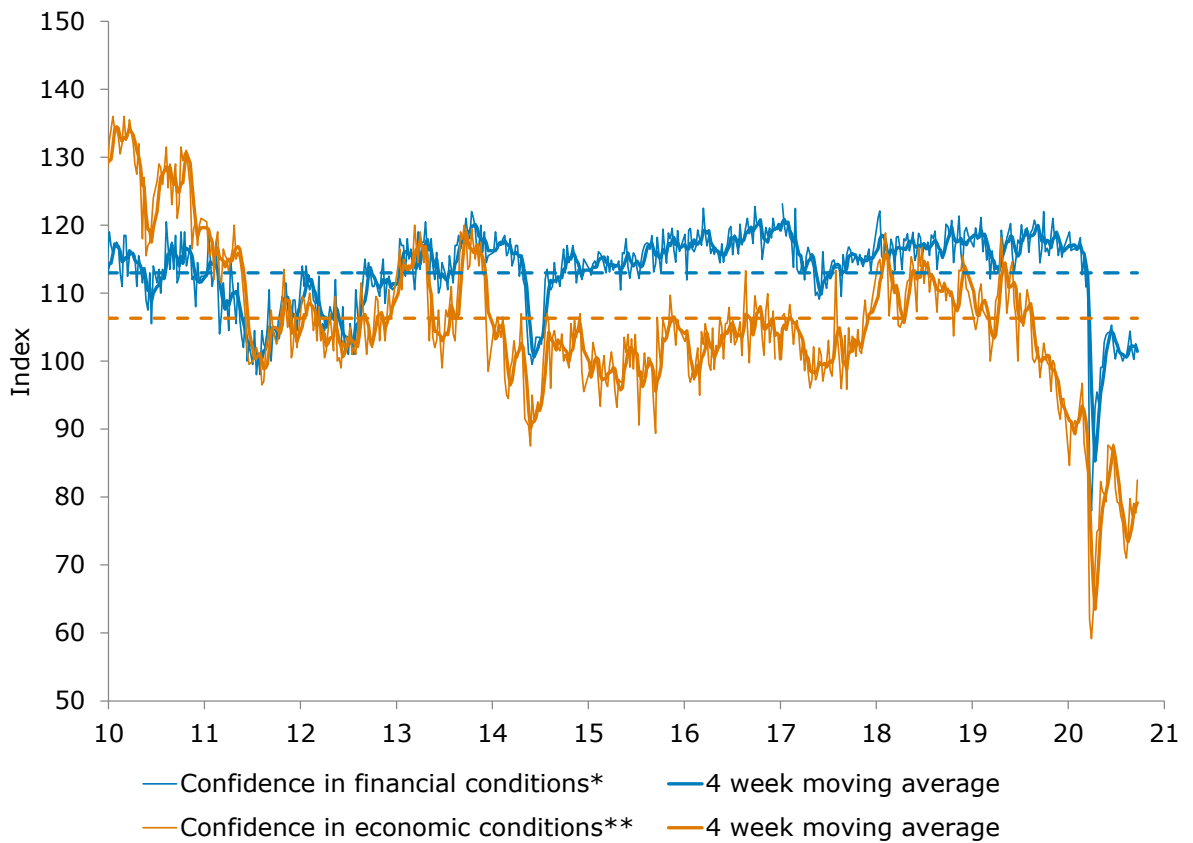


Source: ANZ-Roy Morgan, ANZ Research



Charts

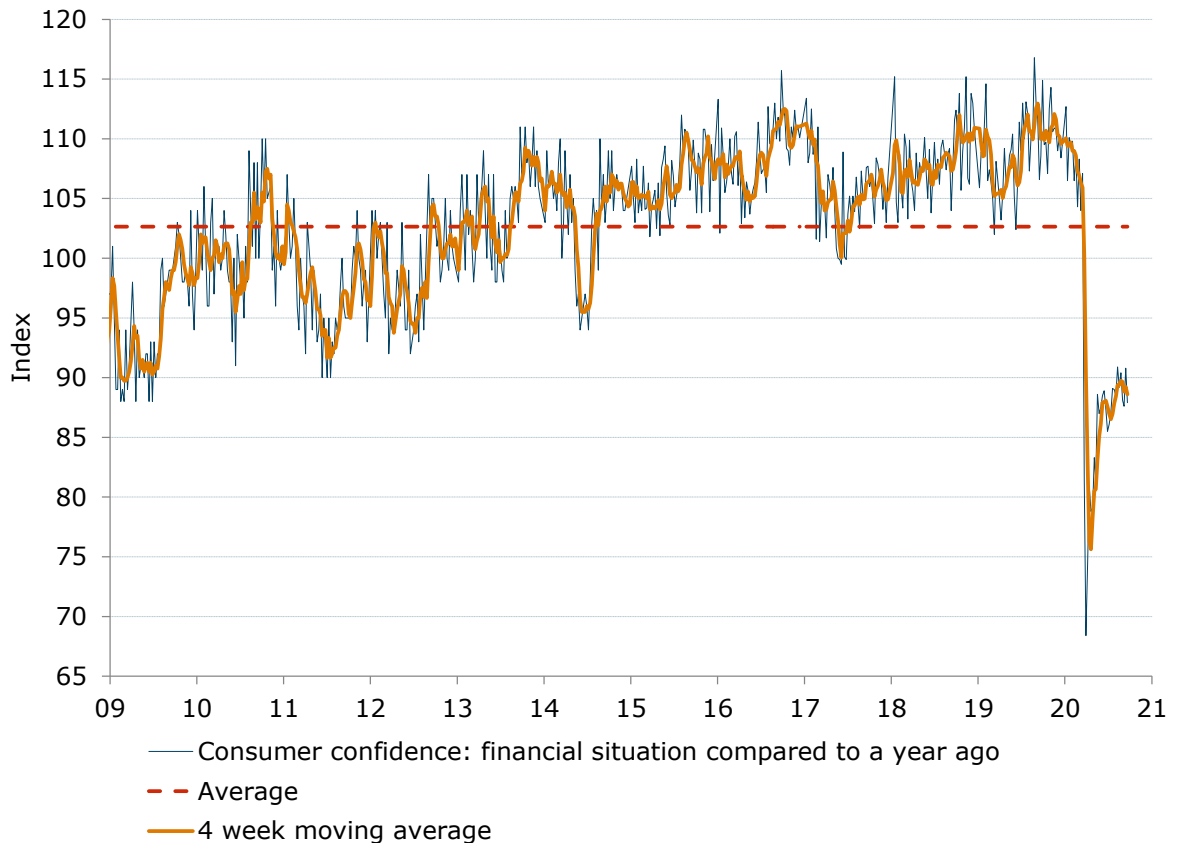
Figure 1. Financial conditions steady while economic conditions improved



Source: ANZ-Roy Morgan

Note: *Financial conditions index is an average of 'financial situation compared to a year ago' and 'financial situation next year' sub-indices. **Economic conditions index is an average of 'economic conditions in 12 months' and 'economic conditions in five years' sub-indices.

Figure 2. 'Current financial conditions' declined by 3.2%

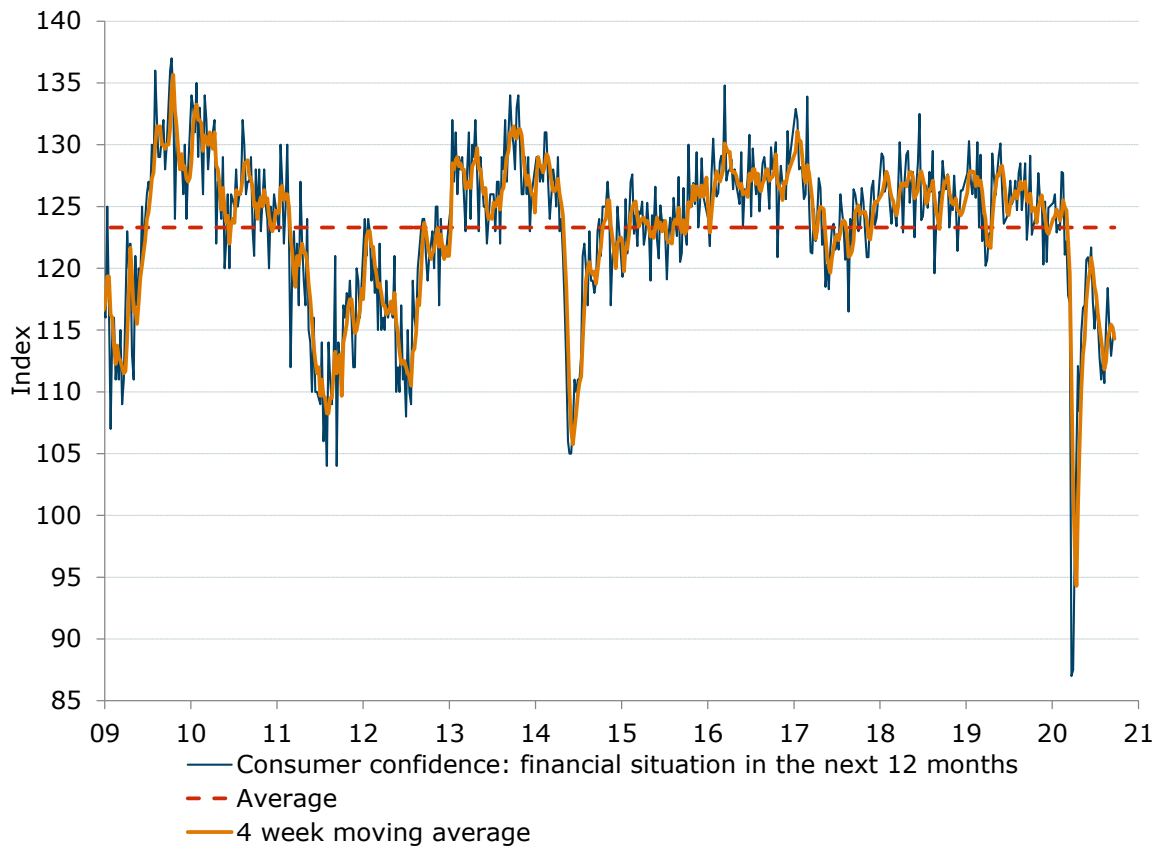


Source: ANZ-Roy Morgan



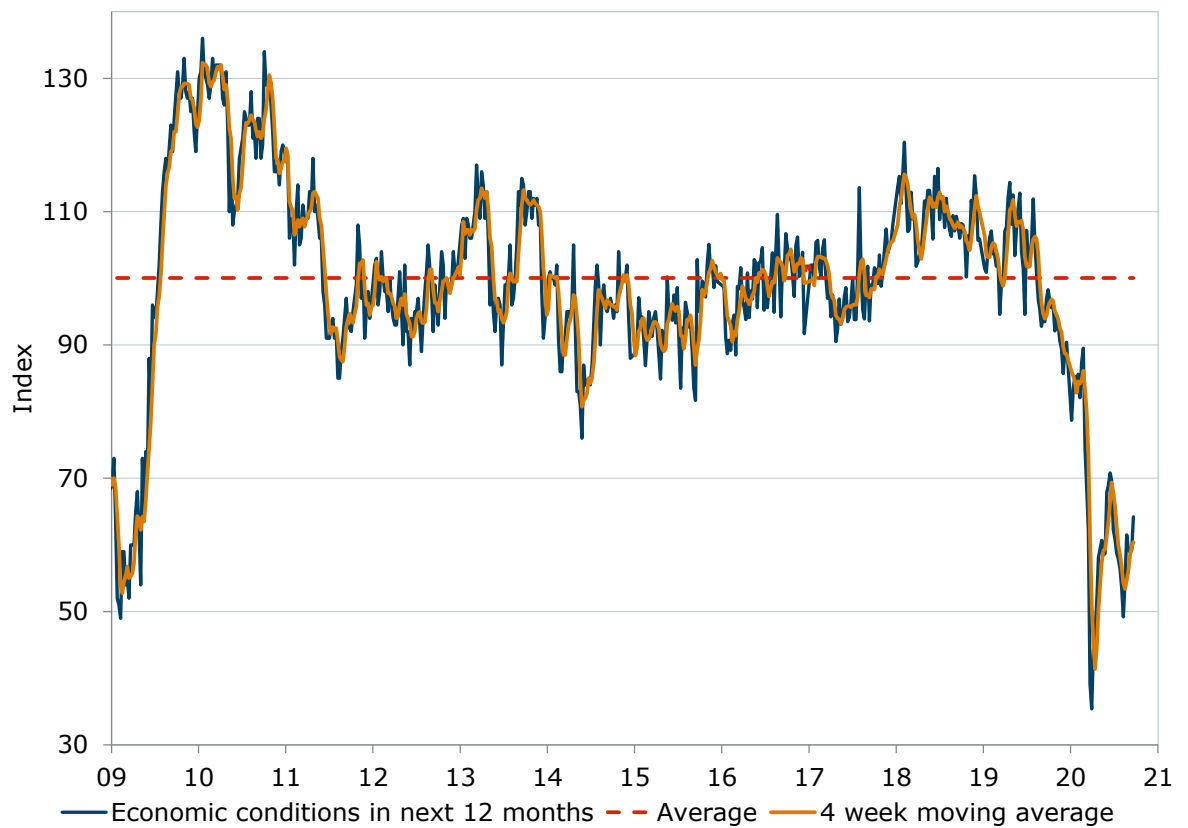
Charts

Figure 3. 'Future financial conditions' rose by 0.4%



Source: ANZ-Roy Morgan

Figure 4. 'Current economic conditions' rose by 8.4%

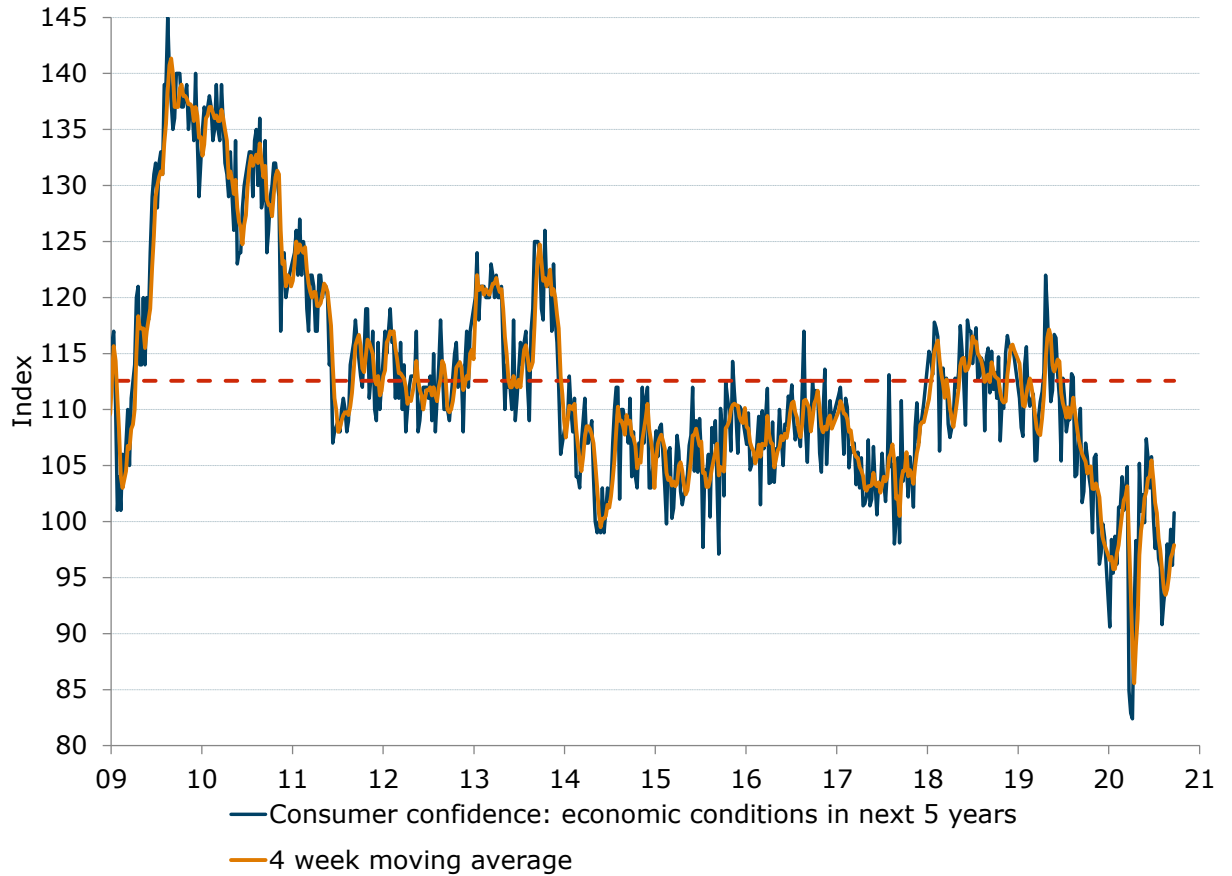


Source: ANZ-Roy Morgan



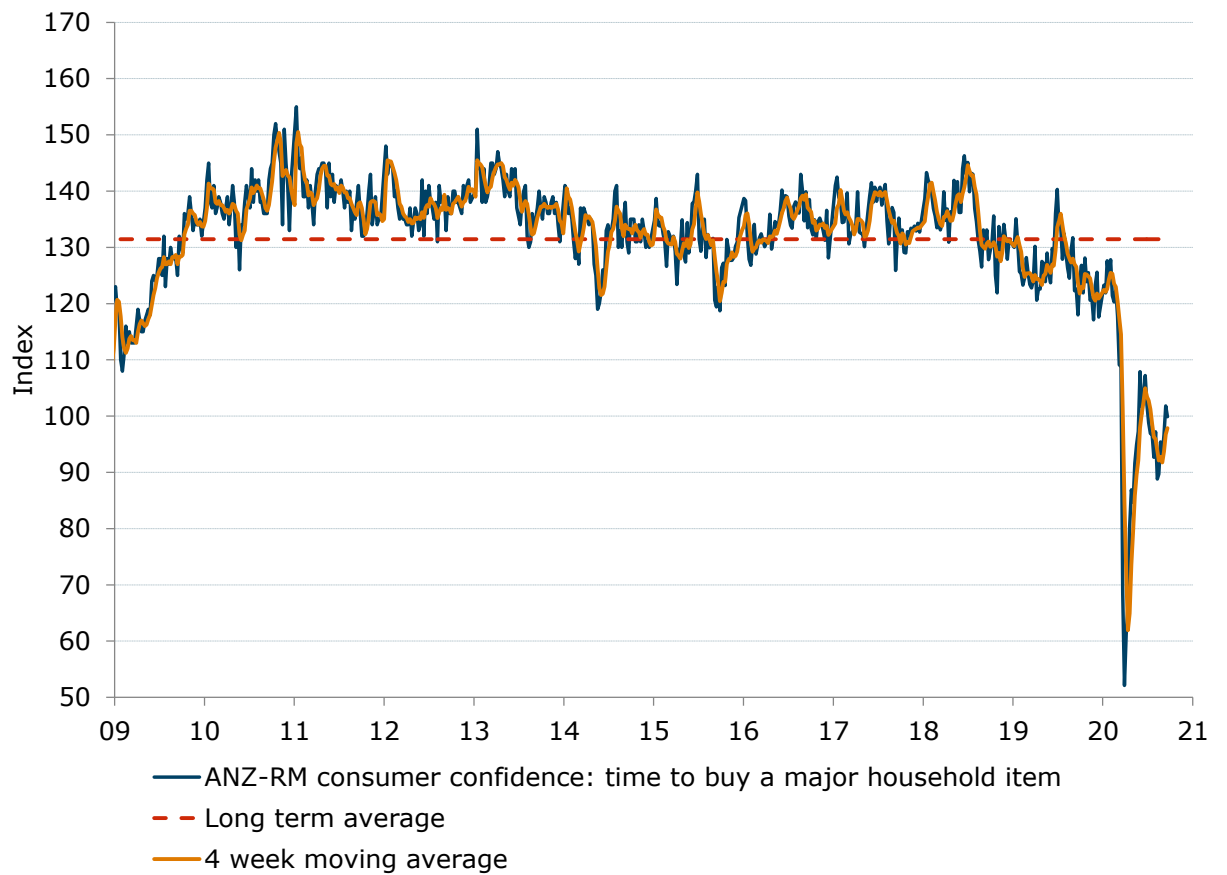
Charts

Figure 5. 'Future economic conditions' rose by 4.9%



Source: ANZ-Roy Morgan

Figure 6. 'Time to buy a household item' declined by 1.9%

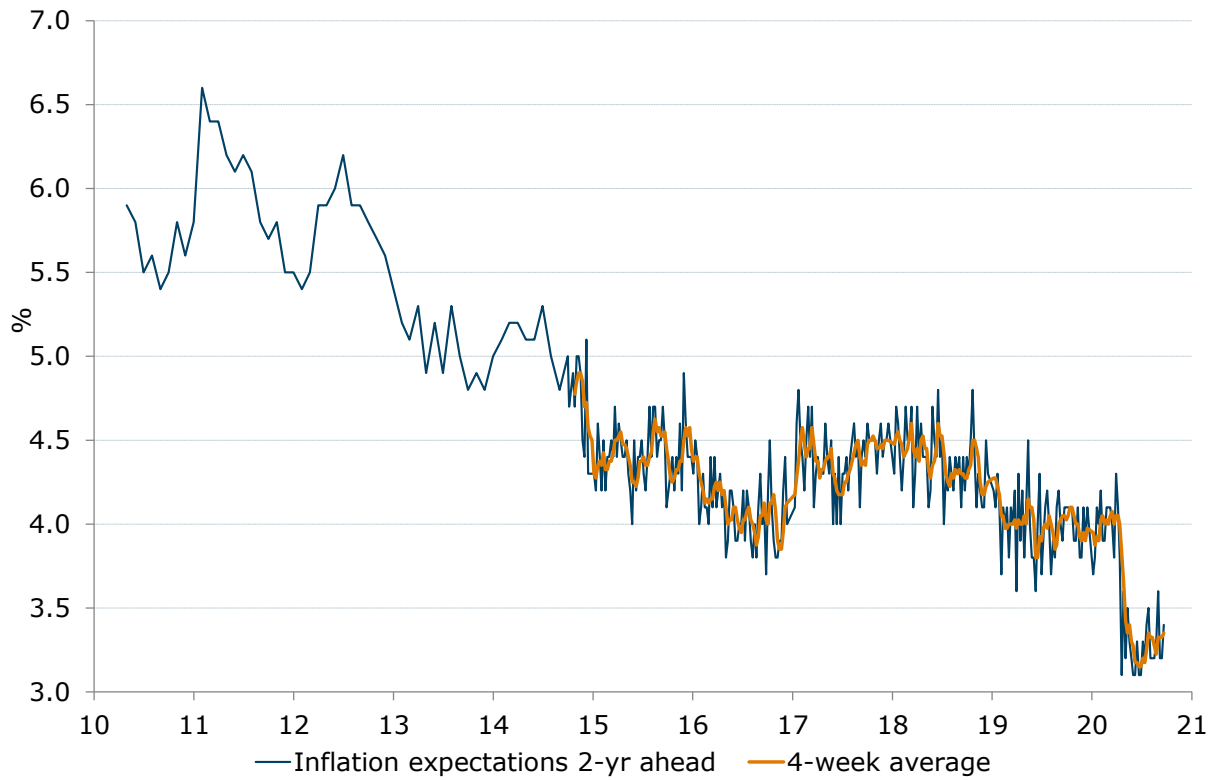


Source: ANZ-Roy Morgan



Charts

Figure 7. 'Inflation expectations' inched up to 3.4% (four-week moving average)



* Data from Oct-2014 is weekly.
Data prior to that is monthly.

Source: ANZ-Roy Morgan



Data table

Table 1. ANZ-Roy Morgan Australian Consumer Confidence

	Headline index		Subindices				Inflation expectations	
	Last week	4-week moving average	1. Financial situation compared to a year ago	2. Financial situation next year	3. Economic conditions next year	4. Economic conditions next 5 years	5. Time to buy a major household item	6. Inflation expectations 2-year ahead (%)
Avg since 2001	115	-	103	124	104	113	133	-
2011 avg	114	-	97	117	101	116	140	6.0
2012 avg	113	-	99	118	97	113	138	5.8
2013 avg	119	-	104	128	106	118	139	5.0
2014 avg	111	-	104	121	94	106	132	4.9
2015 avg	112	-	107	124	94	106	131	4.4
2016 avg	115	-	109	127	99	108	134	4.1
2017 avg	114	-	105	124	100	105	135	4.4
2018 avg	119	-	108	126	109	113	135	4.4
2019 avg	114	-	109	126	101	109	126	4.0
25-Aug-19	114.1	114.6	116.8	124.7	95.4	104.2	129.5	4.1
1-Sep-19	114.4	114.2	113.0	126.3	92.8	108.2	131.7	4.2
8-Sep-19	113.3	113.7	111.7	128.5	94.1	110.1	122.3	4.0
15-Sep-19	109.3	112.8	106.6	122.3	93.5	101.7	122.6	3.9
22-Sep-19	110.1	111.8	108.6	124.3	96.9	102.7	118.0	4.1
29-Sep-19	114.7	111.9	114.9	129.1	98.3	107.0	124.3	4.1
6-Oct-19	112.3	111.6	109.5	122.7	96.6	105.8	126.8	4.1
13-Oct-19	110.9	112.0	109.7	123.5	95.6	104.0	121.9	4.1
20-Oct-19	111.6	112.4	107.1	124.0	95.9	102.9	128.1	4.1
27-Oct-19	110.4	111.3	112.5	124.5	92.1	99.0	123.9	3.9
3-Nov-19	113.5	111.6	114.3	127.7	94.5	105.7	125.5	3.9
10-Nov-19	111.1	111.7	110.6	125.6	93.0	106.0	120.6	4.1
17-Nov-19	109.9	111.2	110.9	125.8	90.6	100.8	121.1	3.8
24-Nov-19	106.8	110.3	110.8	120.3	89.4	96.2	117.1	3.8
1-Dec-19	108.1	109.0	109.0	125.4	85.7	97.2	123.3	4.1
8-Dec-19	109.0	108.5	110.1	120.5	89.0	99.8	125.6	3.9
15-Dec-19	108.0	108.0	108.4	124.9	90.4	98.6	117.6	4.1
5-Jan-20	106.2	107.8	112.7	125.3	78.7	90.6	123.3	3.7
12-Jan-20	107.3	107.6	106.5	126.0	83.5	98.4	121.9	3.8
19-Jan-20	108.3	107.5	110.1	122.9	85.3	95.4	127.6	4.1
26-Jan-20	108.0	107.5	109.5	123.5	83.8	98.7	124.5	4.0
2-Feb-20	108.5	108.0	109.8	123.1	85.6	96.2	127.8	4.2
9-Feb-20	107.8	108.2	106.5	127.8	82.1	101.3	121.4	3.9
16-Feb-20	109.1	108.4	108.6	127.7	87.4	101.3	120.3	3.9
23-Feb-20	108.3	108.4	104.3	121.1	89.5	104.0	122.4	4.1
1-Mar-20	104.8	107.5	108.3	122.2	74.6	101.0	117.8	4.1
8-Mar-20	100.4	105.7	104.0	117.8	68.6	102.7	109.1	4.1
15-Mar-20	100.0	103.4	107.1	117.2	62.2	104.9	108.9	4.0
22-Mar-20	72.2	94.4	81.5	87.0	39.1	84.9	68.4	3.8
29-Mar-20	65.3	84.5	68.4	87.5	35.4	82.9	52.1	4.3
5-Apr-20	71.9	77.4	74.4	97.5	44.1	82.4	61.2	4.1
12-Apr-20	78.2	71.9	80.9	105.2	46.9	92.1	66.1	3.8
19-Apr-20	84.2	74.9	78.8	112.1	51.4	98.3	80.3	3.1
26-Apr-20	85.0	79.8	79.1	108.4	58.1	92.5	86.9	3.6
3-May-20	89.5	84.2	83.3	114.8	59.4	105.2	84.7	3.2
10-May-20	90.3	87.3	81.4	116.8	60.7	100.9	91.6	3.5
17-May-20	92.3	89.3	88.6	117.0	58.5	102.4	94.9	3.3
24-May-20	92.7	91.2	87.0	120.7	58.7	99.9	97.3	3.2
31-May-20	98.3	93.4	87.5	120.9	67.9	107.4	107.9	3.1
7-Jun-20	97.0	95.1	88.5	120.0	69.0	105.7	101.7	3.1
14-Jun-20	97.50	96.4	88.9	121.7	70.8	103.0	103.0	3.3
21-Jun-20	97.50	97.6	87.4	117.3	69.7	105.8	107.2	3.1
28-Jun-20	93.0	96.3	85.5	115.1	62.3	100.3	102.0	3.1
5-Jul-20	92.1	95.0	86.1	117.3	60.9	97.6	98.8	3.3
12-Jul-20	91.6	93.6	87.1	115.7	58.8	99.4	96.9	3.2
19-Jul-20	90.7	91.9	89.1	112.8	57.9	96.7	96.8	3.4
26-Jul-20	89.0	90.9	89.0	111.0	56.5	95.9	92.7	3.5
2-Aug-20	88.6	90.0	88.5	112.8	53.6	90.8	97.2	3.2
9-Aug-20	86.50	88.7	90.9	110.7	49.2	92.8	88.8	3.2
16-Aug-20	88.60	88.2	89.2	115.3	54.4	94.3	89.7	3.2
23-Aug-20	92.70	89.1	90.4	118.4	61.5	98.0	95.4	3.3
30-Aug-20	90.20	89.5	88.1	115.2	59.3	95.4	93.1	3.6
6-Sep-20	91.10	90.7	87.6	112.9	58.9	99.3	96.7	3.2
13-Sep-20	92.40	91.6	90.8	114.3	59.2	96.1	101.8	3.2
20-Sep-20	93.50	91.8	87.9	114.8	64.2	100.8	99.9	3.4

Source: ANZ-Roy Morgan



Important notice

[4 April 2019]

This publication is published by Australia and New Zealand Banking Group Limited ABN 11 005 357 522 ("ANZBGL") in Australia. This publication is intended as thought-leadership material. It is not published with the intention of providing any direct or indirect recommendations relating to any financial product, asset class or trading strategy.

The information in this publication is not intended to influence any person to make a decision in relation to a financial product or class of financial products. It is general in nature and does not take account of the circumstances of any individual or class of individuals. Nothing in this publication constitutes a recommendation, solicitation or offer by ANZBGL or its branches or subsidiaries (collectively "ANZ") to you to acquire a product or service, or an offer by ANZ to provide you with other products or services. All information contained in this publication is based on information available at the time of publication. While this publication has been prepared in good faith, no representation, warranty, assurance or undertaking is or will be made, and no responsibility or liability is or will be accepted by ANZ in relation to the accuracy or completeness of this publication or the use of information contained in this publication. ANZ does not provide any financial, investment, legal or taxation advice in connection with this publication.